



## 120W *Ultra-lightweight* Solar Folding Kits with *ETFE* Technology

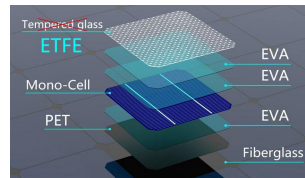
### Power on the GO

5 years panel warranty, 25 years for performance warranty

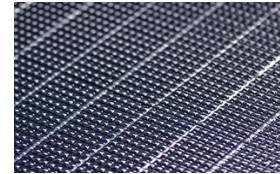
### Highlight Features

- Ultra-lightweight** With **ETFE** technology replacing the tempered glass, the total weight of kits save upto **40%** making the products more portable
- Ultimate Efficiency** **95%** light transparency of **ETFE film** ensures excellent conversion on light to electricity
- Monocrystalline** Adopt **high efficiency** monocrystalline solar cell technology to save the weight and dimension
- Stain Resistance** Thanks to **ETFE** film properties, it can perform the unique surface self-cleaning by rain
- Patent Controller** Unique integrated controller technology improving the system power by reducing the line loss
- Plug and Play** Equipped with **quality** big current plugs, alligator clips and latches for quick connection
- Adjusting Free** **Optimized angle design** per local markets radiation condition for free on height and angle adjustment
- Abundant Options** Multi-foldable design, Cigarette lighter, Anderson plugs, LCD display controller, adjustable support

### ETFE replacing heavy glass saving 40% weight



### ETFE Technology in Details



### Opened



### Folded



### Application

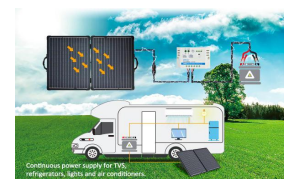
#### Portable Power System



#### Camping



#### Caravan



### Specifications

#### Electrical Specifications

Nominal Max Power	120Wp
Max Power Voltage	17.8V
Max Power Current	6.75A
Open Circuit Voltage	22.5V
Short Circuit Current	7.5
Operating Temperature	-40°C to 85°C
Max System Voltage	1000V DC (IEC)
Standard Test Condition	AM1.5/1000W/m <sup>2</sup> /25°C
Max Charge/load Current	15A
Power Tolerance	0-3%

#### Mechanical Specifications

Solar Cell	PERC Mono-crystalline
Product Weight	6.5kg
Dimension Folded	730×520×75mm
Dimension Open	1460×555×35mm
<b>Encapsulation</b>	<b>ETFE/EVA/Cell/EVA/Backsheet</b>
Handle Material	Stainless Steel
Panel Frame	Alloys Anodized Aluminium
Output Cable	Dia./14AWG, Length/5m
Junction Box	IP65 Water Proof
Controller Function	Auto Detect 12V/24V

#### Packing Details

120W folding solar panel(2x60W)
with Supports integrated
5 M cables
Heavy duty carry bag
Alligator clips
Anderson plugs
Controller integrated technology